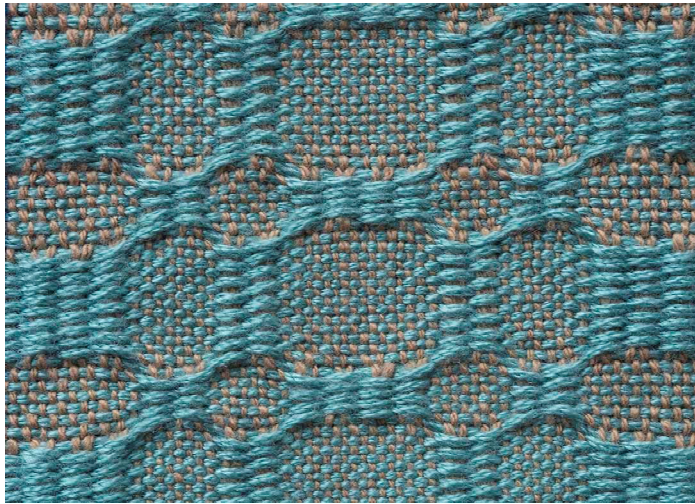


## M's & O's

M's & O's is a unit or grouped weave, but, unlike the others, it doesn't produce lacey blocks. There are two blocks possible on four shafts; each block uses all four shafts in different configurations, producing interlaced floats or plain weave, as shown in the fabric below. Thus,



there is no selvage threading to produce plain weave down the length of the fabric, nor is it possible to have plain weave across the fabric; a pseudo-basket weave is used instead, as shown in the drawdown below.

The cloth is similar on both sides, that is, floats appear in the same block on both sides of the fabric.

Threads are pulled by the

interlacements in the blocks and spread by the plain weave areas; this results in the look that gives the structure its name: the float areas form M's, and the plain weave areas form O's – and yes, a bit of imagination is needed to see them.

Blocks can be doubled, as shown in the fabric above where the block in the center has two sets of interlacing floats.

